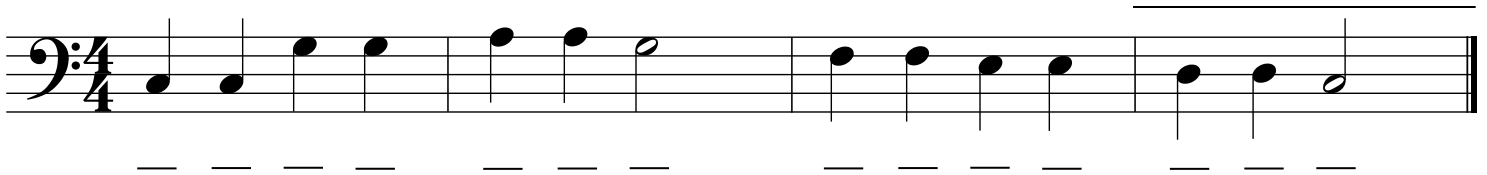
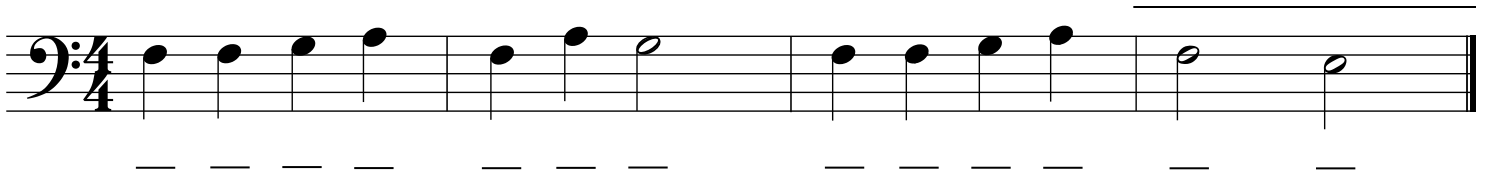
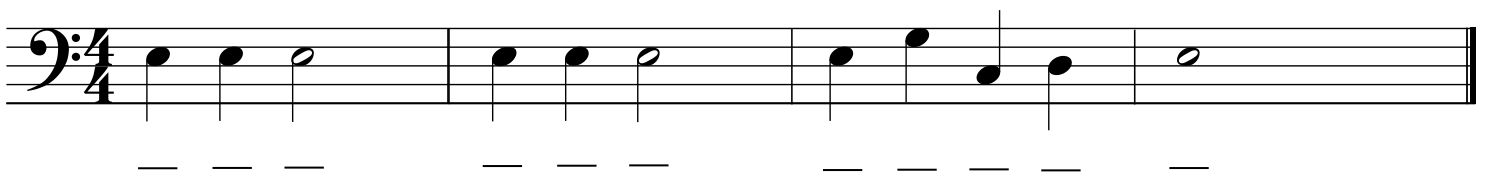
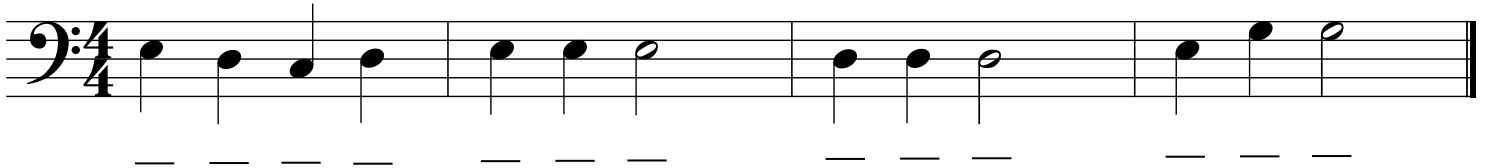


About This Activity

Each of the puzzles is a phrase from a popular children's song. Name each note, placing the alphabet letter in the space below the note. After you name the notes, try playing the song. If you can guess the song, write its name on the line above the staff. This activity is great fun for the music classroom, as kids work together in pairs (each pair has an Orff xylophone) racing to be the first to complete the worksheet!

Bass Clef

Name That Tune!



Possible Answers: Twinkle, Twinkle, Little Star • Ode to Joy • Yankee Doodle • Jingle Bells • Jolly Old St. Nicholas • Mary Had a Little Lamb • Old MacDonald • This Old Man

